

*Franklyn  
James*



Regents Gate House, Horseferry Road, E14 8DZ

£2,150 Per Calendar Month



## Regents Gate House, Horseferry Road, E14 8DZ

£2,150 Per Calendar Month

- Unfurnished
- Recently refurbished with fresh paint and brand new blinds
- Two spacious double bedrooms and two modern bathrooms
- Bright and airy reception room with excellent natural light
- Fully equipped separate kitchen
- Large private decked terrace
- Secure underground parking space included
- Lift access
- Access to an additional large communal terrace for residents
- Short walk to Limehouse DLR with easy links to Canary Wharf & The City

EPC rating- C  
Tax band- D

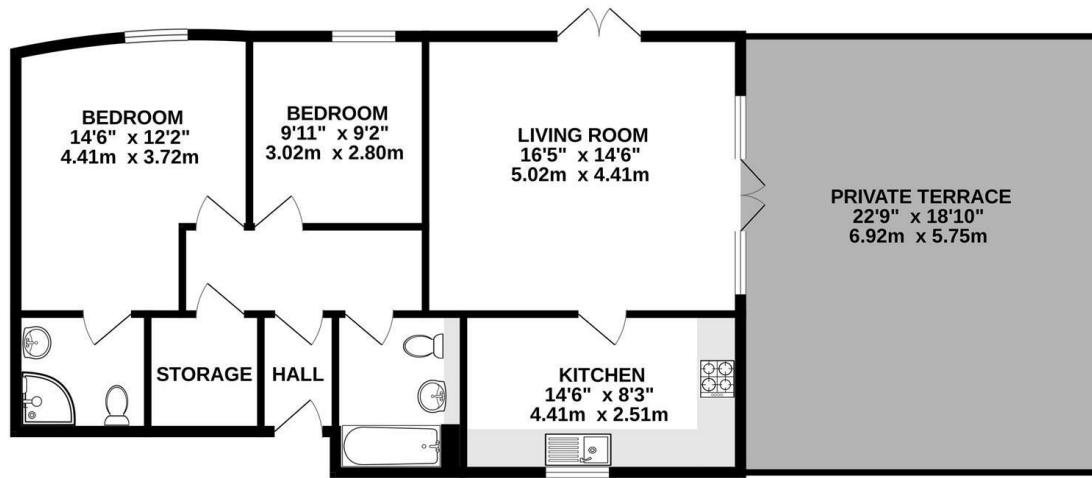


A bright and spacious two double bedroom, two bathroom apartment set on the top floor of the modern Regents Gate House development just a short walk from Limehouse DLR station. This recently refurbished property has been freshly painted and fitted with brand new blinds.

The apartment features a generous reception room, a fully equipped separate kitchen and a large private decked terrace ideal for outdoor dining or relaxing.

Further benefits include secure underground parking, an additional large communal terrace for residents and lift access.

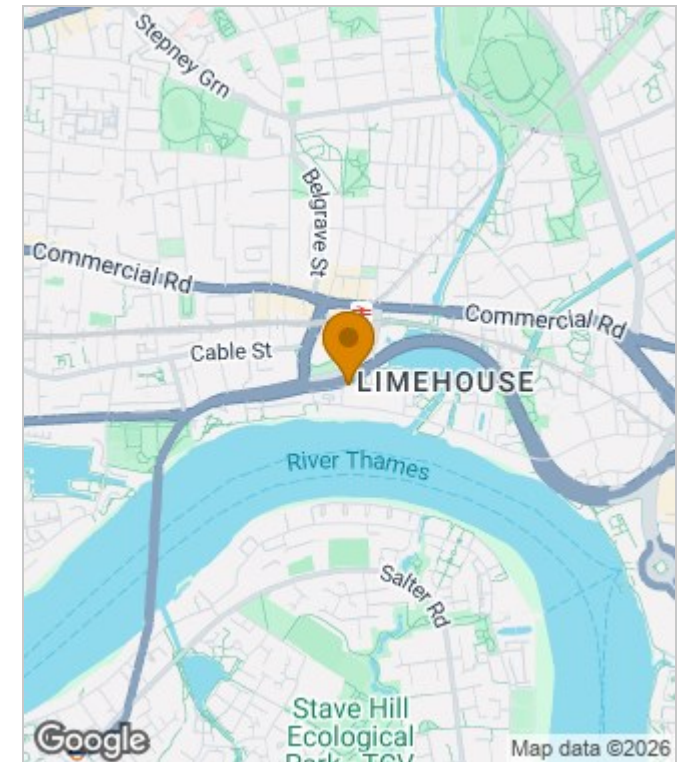
With easy access to both Canary Wharf and The City, this unfurnished apartment offers a perfect combination of space, comfort and connectivity in a well maintained modern development.



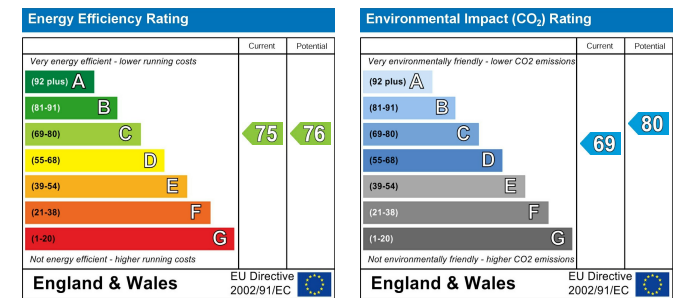
TOTAL FLOOR AREA : 822 sq.ft. (76.4 sq.m.) approx.

Whilst every attempt has been made to ensure the accuracy of the floorplan contained here, measurements of doors, windows, rooms and any other items are approximate and no responsibility is taken for any error, omission or mis-statement. This plan is for illustrative purposes only and should be used as such by any prospective purchaser. The services, systems and appliances shown have not been tested and no guarantee as to their operability or efficiency can be given.  
Made with Metropix ©2025

### Area Map



### Energy Performance Graph



These particulars, whilst believed to be accurate are set out as a general outline only for guidance and do not constitute any part of an offer or contract. Intending purchasers should not rely on them as statements of representation of fact, but must satisfy themselves by inspection or otherwise as to their accuracy. No person in this firm's employment has the authority to make or give any representation or warranty in respect of the property.



29 Narrow Street, London, E14 8DP  
Tel: 02077911777 Email: [lettings@franklynjames.co.uk](mailto:lettings@franklynjames.co.uk) <https://www.franklynjames.co.uk>